

EN

Sami Tag Duo

User Manual ST-2501

iOS

Require system

iOS 14.5 above

Android 9 above

Main Functions

Locate your item

Apple's Find My network and Google Find Hub service provide an easy, secure way to locate compatible personal items on a map using the Find My app on your Apple or Android devices. This device supports both Apple Find My network and Google Find Hub, Pairing requires an Apple or Android phone or tablet, with iOS 14.5 or Android 9 and above, but these two services cannot be used simultaneously. Activating one will automatically disable the other.

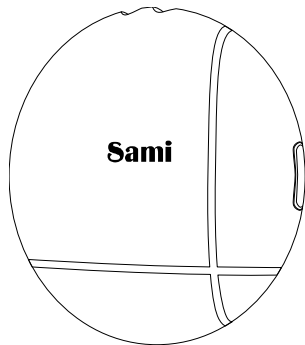
Button & Sound Description

Power On: Click the button (long beep)

Power Off: Hold the button for 5 seconds (2-time beep)

Reset:

Click the button 5 times and hold it from the 5th click until hearing a long beep



Quick instructions

1.1 Power On

Press the SamiTag Switch on/off Button once to turn it on. It should long beep once to indicate that it is powered on.

1.2 Check For Updates

To use the Apple Find My app to locate this item, the latest version of iOS, iPadOS, or macOS is recommended.

2.1 Add Your SamiTag

Open Find My app on your supported iOS device. Turn on the bluetooth and network of your device.

2.2 Connect Your SamiTag

Choose ‘ ‘ Items’ ’ Tab, then click add button and choose "Add Other Item", Once your SamiTag is located, tap "connect", Enter a name and choose an emoji for your SamiTag and tap "Continue". Find My will ask for confirmation to your Apple ID, Tap "Agree" and "Finish", then your SamiTag will be set up and ready to be used.

3.1 Find SamiTag When It's Nearby

Open Find My app and select the "Items" tab. Tap your item from the list. Tap "Play Sound" to make your SamiTag beep.

3.2 Find SamiTag Location

Open Find My app and select the "Items" tab. Tap your SamiTag from the list. Your SamiTag location will appear on the Map with a time stamp when the item was located. To navigate to the SamiTag's location, tap "Directions" to open Apple Maps.

4.1 Notifications

Enable "Notify When Left Behind".

Open Find My app and select the "Items" tab. Tap on your item from the list. Under "Notifications", enable the "Notify When Left Behind" toggle. You will receive a notification when you leave your SamiTag behind and it's no longer in range of your device.

4.2 Enable "Notify When Found"

Under "Notifications", enable the "Notify When Found" toggle.

When your SamiTag is seen by another Find My network device, you will receive a notification of its location. Note : "Notify When Found" can only be activated when your SamiTag is out of range.

5.1 When Your SamiTag is Lost / Enabling "Lost Mode".

Open Find My app and select the "Items" tab. Tap on your item from the list. Under "Lost Mode" tap "Enable". A screen detailing Lost Mode will pop up, tap "Continue". Enter your phone number or email address and tap "Next" You may enter a message that will be shared with the person that finds your item.

Tap "Activate" to enable "Lost Mode" Note: When "Lost Mode" is enabled, "Notify When Found" is automatically enabled.

Note: When "Lost Mode" is enabled, your SamiTag is locked and cannot be paired to a new device.

6.1 Resetting SamiTag

1. Open Find My app and select the "Items" tab. Tap on your item from the list. Please ensure "Lost Mode" is disabled. Scroll to the bottom of the screen and tap "Remove Item". A summary will open, tap "Remove" to confirm.

2. Press the button to power on your SamiTag.


3. After successfully removing the SamiTag from Find My app. Press continuously the SamiTag's power on/off button 6 times until you hear a long beep. The SamiTag is now reset and ready to be paired to a new Apple ID/iOS device.

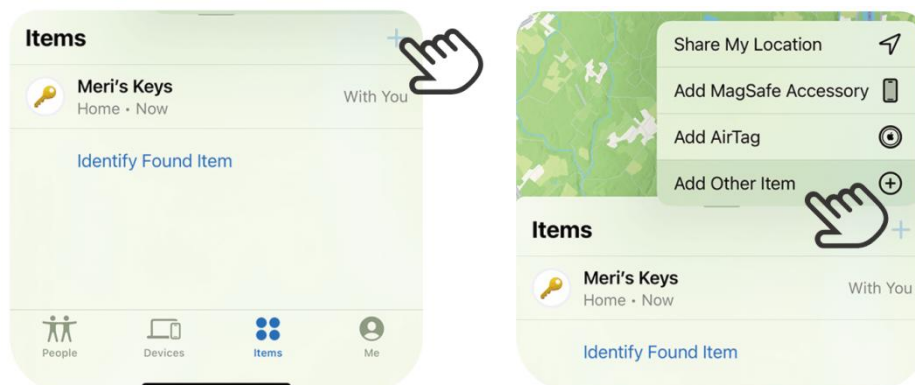
7.1 Unwanted tracking

If any Find My network accessory separated from its owner is seen moving with you over time, you'll be notified, Find My will send a notification to your Apple devices. This feature is available

on iOS or iPadOS 14.5 or later. This features were created specifically to discourage people from trying to track you without your knowledge.

Quick Add Your SamiTag

1. Power on the SamiTag.
2. Open the Find My  , tap +, then tap Add Other Item/Other Supported Item.
3. Tap connect, Enter a name and choose an emoji for your SamiTag and tap Continue.
4. To register the SamiTag with your Apple ID, tap Continue again.
5. Tap Done, now you can attach your SamiTag to an item and see it in the Find My app.



Compatibility

To use Google's Find My Device app on your Android phone or tablet to locate SamiTag, the device must be running Android 9 or later with Google Play Services installed.

The Apple Find My network provides an easy, secure way to locate compatible personal items using the Find My app on your iPhone, iPad, Mac, or the Find Items app on Apple Watch.

To use the Apple Find My app to locate this item, the latest version of iOS, iPadOS, or macOS is recommended. The Find Items app on Apple Watch requires the latest version of watchOS.

Use of the Works with Apple badge means that a product has been designed to work specifically with the technology identified in the badge and has been certified by the product manufacturer to meet Apple Find My network product specifications and requirements. Apple is not responsible for the operation of this device or use of this product or its compliance with safety and regulatory standards.

Apple, Apple Find My, Apple Watch, Find My, iPhone, iPad, iPadOS, Mac, macOS and watchOS are trademarks of Apple Inc., registered in the U.S. and other countries. IOS is a trademark or registered trademark of Cisco in the U.S. and other countries and is used under license.

2-Year Limited Warranty Service

Effective from the date of purchase. If the product encounters quality issues during normal use, please contact us below and write us email with a description of the issue. Our team will verify the information and help you to solve the issue (excluding damage caused by misuse). To ensure efficient processing, we recommend keeping the original purchase proof (order number). During the warranty period, we are committed to providing you with a quick solution, so you can use our product with peace of mind!

Android

Product Overview

SamiTag is a smart tracker device that uses Google Find Hub service, paired with the "Google Find Hub" app on Android devices, to quickly and securely locate your personal items on Google Maps. All location information remains private, and even Google cannot access it.

Before You Start

SamiTag only supports the "Google Find Hub" app. Please make sure to download and install this app from the "Play Store" before use.

The device is compatible only with Android devices running Android 9 or higher. SamiTag does not support Huawei devices.

Once SamiTag is paired with a device, it will be locked and cannot be paired with another device.

Button and Sound Instructions

Power On: Press the button once (a beep will sound).

Power Off: Press and hold the button for 5 seconds (two short beeps will sound).

Reset:

Open the "Google Find Hub" app, select your SamiTag, tap the Settings button, then tap "Remove from Find Hub" and confirm.

After removing it, press continuously the SamiTag button 6 times, and when you hear a long beep, the device will be reset.

Note: Please power on the SamiTag and remove the device from the "Google Find Hub" app before resetting.

Fast Pair Instruction

Add SamiTag

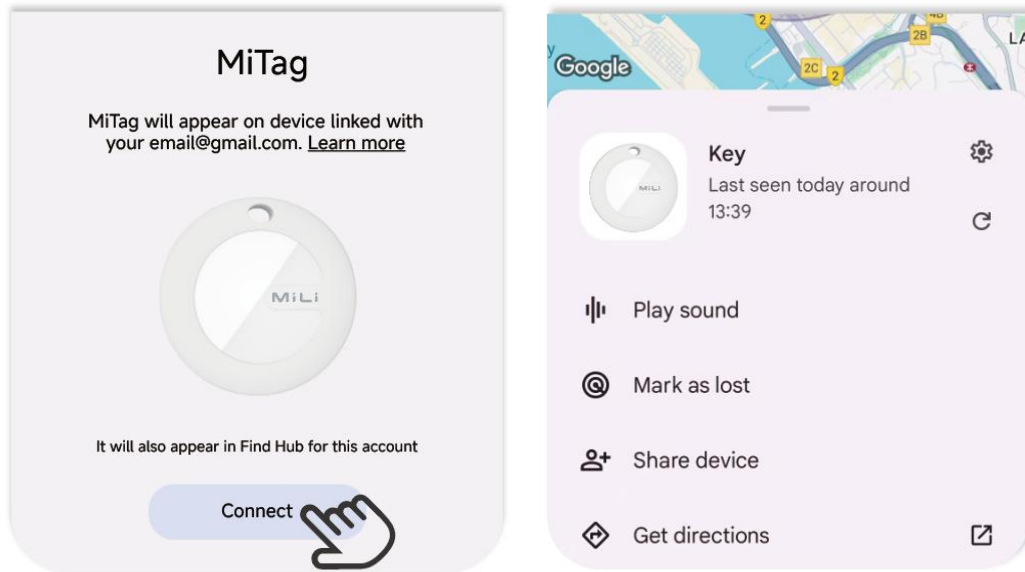
Make sure your phone's Bluetooth and network are turned on.

Press the button once to turn on SamiTag (a beep will sound).

Bring SamiTag close to your Android device and wait for the pop-up to show SamiTag. (Remark: If no pop-up appears, please restart your phone and try again).

Tap "Connect", read and accept the prompts to complete the pairing.

In the "Google Find Hub" app, select "SamiTag" to customize the device name and Category.



Reconnection Instructions

(If you miss the pop-up)

Reset the SamiTag

If no pop-up appears, reset the SamiTag by quickly pressing the button six times(a long beep).

Note: If no pop-up appears after resetting the SamiTag, please restart your phone and try again.

Find Nearby

In the "Google Find Hub" app, select your SamiTag and tap "Play Sound" to locate your device.

Once found, tap Stop Sound to silence the device.

Find Far Away

In the "Google Find Hub" app, select your SamiTag, tap the device to view its location.

To navigate to the location, tap "Get Directions" to open map navigation.

Enable Lost Mode

In the "Google Find Hub" app, select your SamiTag and tap "Mark as Lost".

Add your contact information and you will get a notified if the Find Hub network locates it.

SamiTag Location Sharing

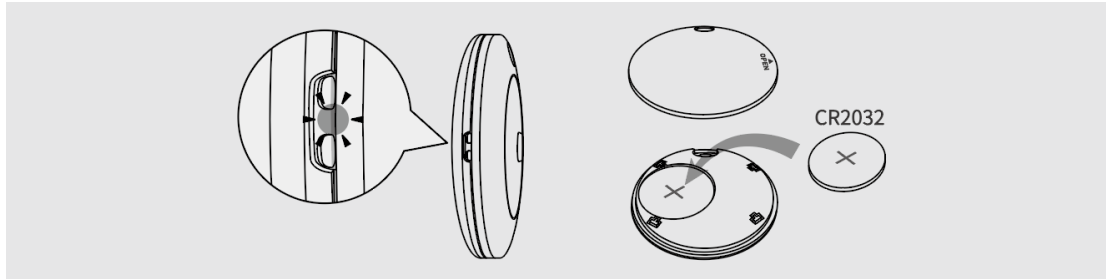
In the "Google Find Hub" app, select your SamiTag, then tap "Share Device".

Connect to another phone

After completing the reset process, then connect to another Android phone.

Battery replacement:

1. Find the slots on the left side and open it with both hands, or you can try using a sharp object to pry it open.
2. Remove the battery.
3. Insert the new CR2032 battery into the device with the positive (+) side facing up.
4. After inserting the battery, align the slots and attach the top cover. Turn off and then restart the device. If there is no sound, please confirm whether the battery is installed correctly.



*After replacing the battery, you can use it without reconnection.

FCC Statement

1. This device complies with Part 15 of the FCC Rules. Operation is subject to the following two conditions:

(1) This device may not cause harmful interference.

(2) This device must accept any interference received, including interference that may cause undesired operation.

2. Changes or modifications not expressly approved by the party responsible for compliance could void the user's authority to operate the equipment.

Note : This equipment has been tested and found to comply with the limits for a class B digital device, pursuant to Part 15 of the FCC Rules. These limits are designed to provide reasonable protection against harmful interference in a residential installation.

This equipment generates uses and can radiate radio frequency energy and, if not installed and used in accordance with the instructions ,may cause harmful interference to radio communications. However, there is no guarantee that interference will not occur in a particular installation. If this equipment does cause harmful interference to radio or television reception, which can be determined by turning the equipment off and on, the user is encouraged to try to correct the interference by one or more of the following measures:

- Reorient or relocate the receiving antenna.
- Increase the separation between the equipment and receiver.
- Connect the equipment into an outlet on a circuit different from that to which the receiver is connected.
- Consult the dealer or an experienced radio/TV technician for help.

The device has been evaluated to meet general RF exposure requirement.

The device can be used in portable exposure condition without restriction.

Android Compatibility

Pairing requires an Android phone or tablet.

To use Google Find Hub app on your Android phone or tablet to locate Smart Finder, the device must be running Android 9 or later with Google Play Services installed.

Google Find Hub helps you find your belongings quickly and safely – even when your devices are offline or far away. From your misplaced car keys to the tablet hiding beneath your couch cushions, it's easier than ever to keep track of your items. Plus, all of your location information remains private – even from Google.